

The operations described below are the only ones that the operator is authorized to carry out; any other intervention on the equipment is considered tampering and it will involve the automatic decadenace of the guarantee.

- Every maintenance operation must be carried out after disconnecting the battery from the equipment.
- Please do a periodic check of the nuts. Please verify that they are not loosed and that the equipment is not damaged.
- **Periodically** lubricate the guide of the key on the piston stroke with grease.
- Check that the threading on the equipment and on the kit of accessories is not damaged.
- **Periodically** clean the equipment with care, removing dirty, dust and possible smear and slippery substances. Use self-cleaning clothes, do not use water, inflammable or corrosive liquids.

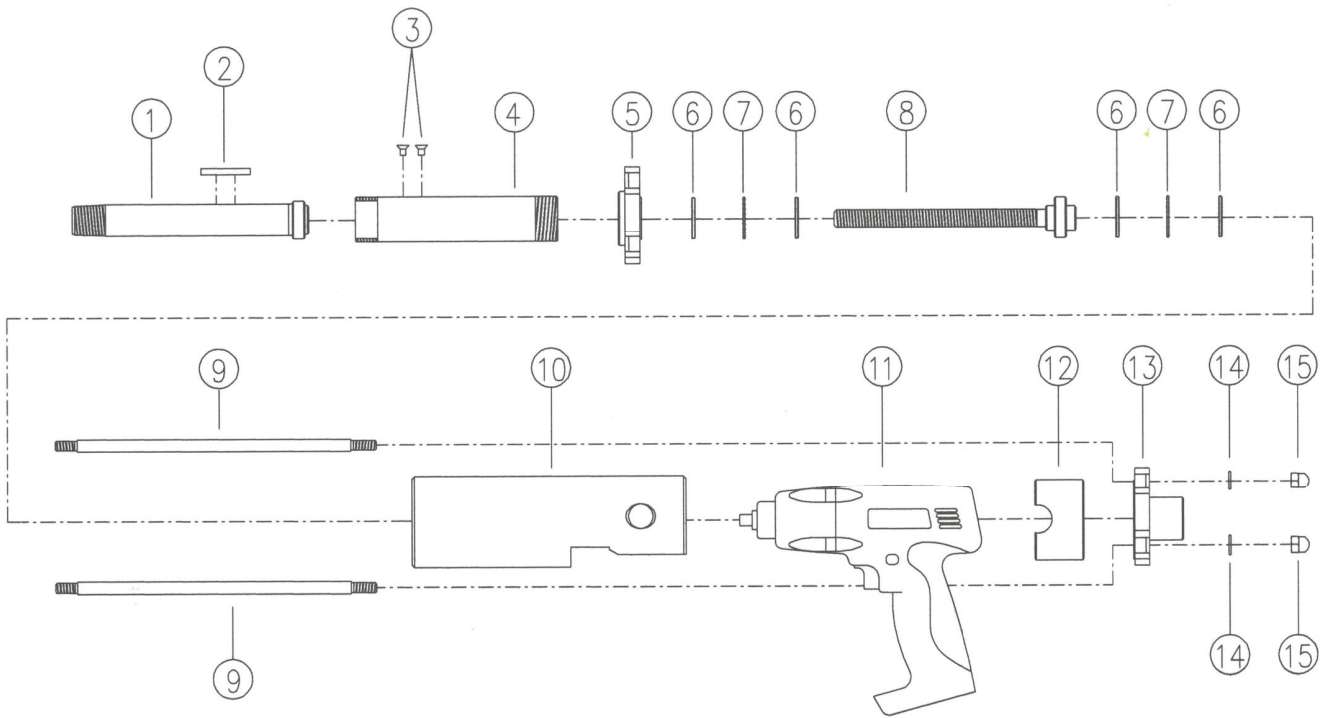
8. EXPLODED VIEWS and SPARE PARTS

SPARE PARTS OF THE ELECTRO POWER COMPLETE KIT

KET			
POS.	CODE	DESCRIPTION	Q.TY
1	EP.09	HOLDER BASE	1
2	40.02	VISOR COLLAR	1
3	EP.10	PIVOT BASE	1
4	EP.11	QUOIN PUNCH	1
5	EP.12	4 POINTS PUNCH	1
6	EP.18	CHAIN CONNECTOR	2
7	EP.24	FEMALE ADAPTOR FOR EXTENSION	2
8	EP.25	RUBBER PAD	1
9	EP.13	EXTENSION L.80 mm	1
10	EP.14	EXTENSION L.125 mm	1
11	EP.15	EXTENSION L.170 mm	1
12	EP.16	EXTENSION L.300 mm	1
13	EP.17	EXTENSION L.500 mm	1
14	49A.03	CASE	1
15	EP.01/IC	ELECTRO POWER	1
16	22I.01	BATTERY CHARGER 220V	1
17	21G.05	BATTERY	2

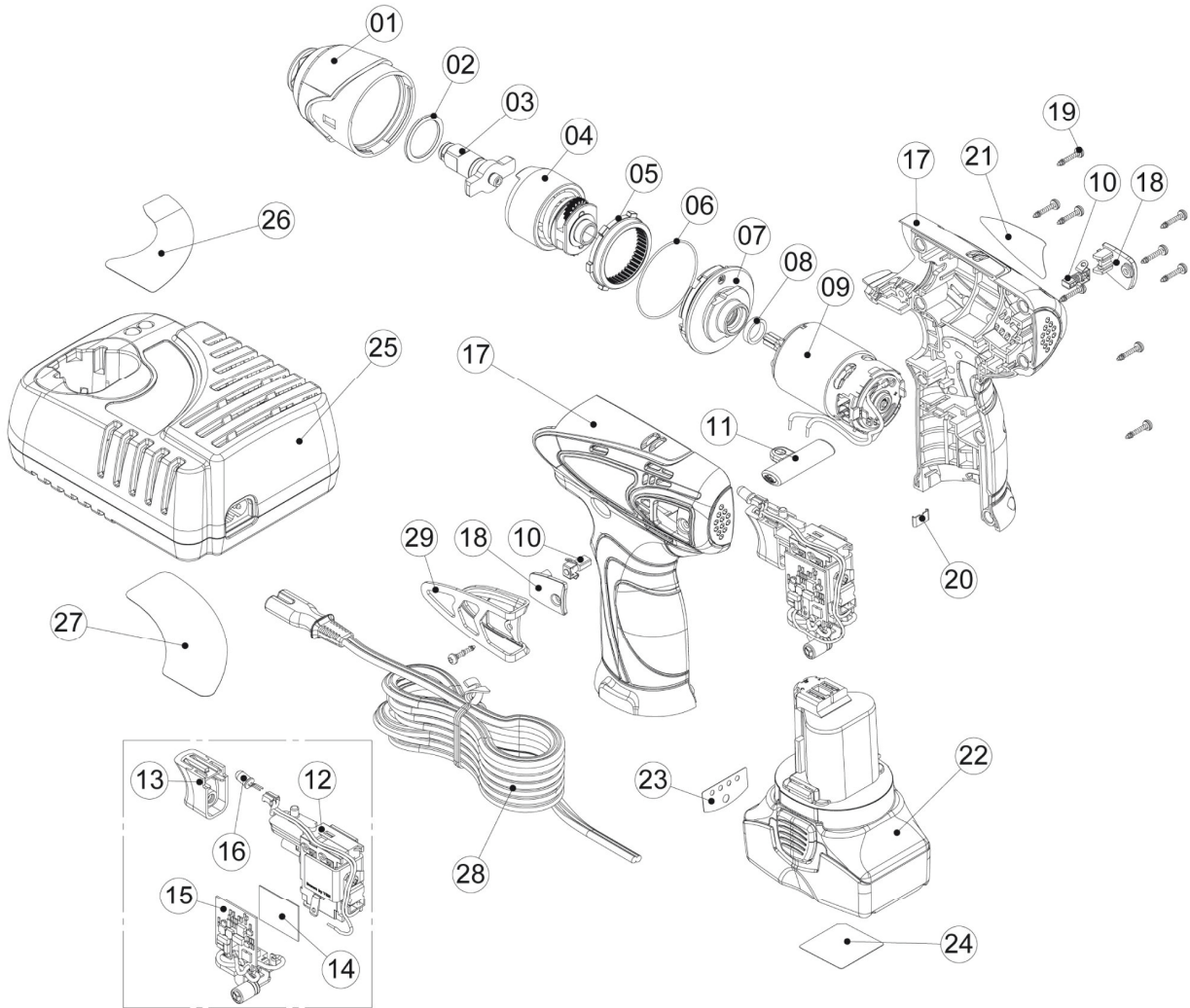
ELECTRO POWER EXPLODED VIEW

EP.01



POS.	CODE	DESCRIPTION	Q.TY
1	EP.20	STEM	1
2	EP.21	KEY	1
3	1D.11	SCREW T.P. SE.I	2
4	EP.19	CYLINDER BARREL	1
5	EP.02/IC	ANTERIOR PLUG	1
6	37A.25	SHOULDER FOOTSTEP	4
7	37A.23	BEARING	2
8	EP.07/IC	SCREW FOR STEAM	1
9	EP.06/IC	TIE BAR	4
10	EP.04/IC	GUARD DRIVEN	1
11	22Z.01	DRIVEN	1
12	EP.05/IC	INTERNAL RING	1
13	EP.03/IC	POSTERIOR PLUG	1
14	3A.04	RING	4
15	2C.04	ACORN NUT	4

CORDLESS EXPLODED VIEW 22Z.01



MODEL : 22Z.01

COD.	NO.	PARTS NAME	Q
22Z.02	1	FRONT COVER ASS'Y	1
22Z.03	2	WASHER	1
22Z.04	3	FRONT IMPACT ASS'Y	1
22Z.05	4	REAR IMPACT ASS'Y	1
22Z.06	5	RING GEAR	1
22Z.07	6	O-RING	1
22Z.08	7	MOTOR FIXITY ASS'Y	1
22Z.09	8	RUBBER WASHER	1
22Z.10	9	MOTOR ASS'Y	1
22Z.11	10	CARBON BRUSH ASS'Y	2
22Z.12	11	FORWARD/REVERSE ROD	1
22Z.13	12	SWITCH	1
22Z.14	13	TRIGGER	1
22Z.15	14	THERMAL CONDUCTIVE PAD	1
22Z.16	15	PCB ASS'Y	1
22Z.17	16	LED	1
22Z.18	17	HOUSING-L&R	1
22Z.19	18	CARBON BRUSH COVER	2
22Z.20	19	HOUSING SCREW	10
22Z.21	20	HOUSING CLIP	1
22Z.22	21	HOUSING LABEL-R	1
21G.05	22	BATTERY PACK	1
22Z.23	23	FUEL GAUGE LABEL	1
22Z.24	24	BATTERY LABEL	1
22I.01	25	CHARGER	1
22Z.25	26	CHARGER UPPER LABEL	1
22Z.26	27	CHARGER LOWER LABEL	1
22I.02	28	POWER CORD	1
22I.02/UK	28	POWER CORD MOD. UK	OPT.
22I.02/USA	28	POWER CORD MOD. USA	OPT.
22Z.27	29	HOOK(OPTIONAL)	1